



MOHANLAL  
SUKHADIA  
UNIVERSITY  
UDAIPUR



DEPARTMENT  
OF  
ZOOLOGY

# Topic

# Antennal Grooming In Cockroach

*B.Sc. 3<sup>rd</sup>*  
*Practical of Zoology*

By  
**Pradeep Kumar Jangir**  
*Department of Zoology*  
*University College of Science*  
*Mohanlal Sukhadia University, Udaipur (Raj.)*

# Antennal

Means Antenna  
(A sensory Part of the body)

# Grooming

cleaning various sensory  
organs



## **Why Grooming is Necessary:**

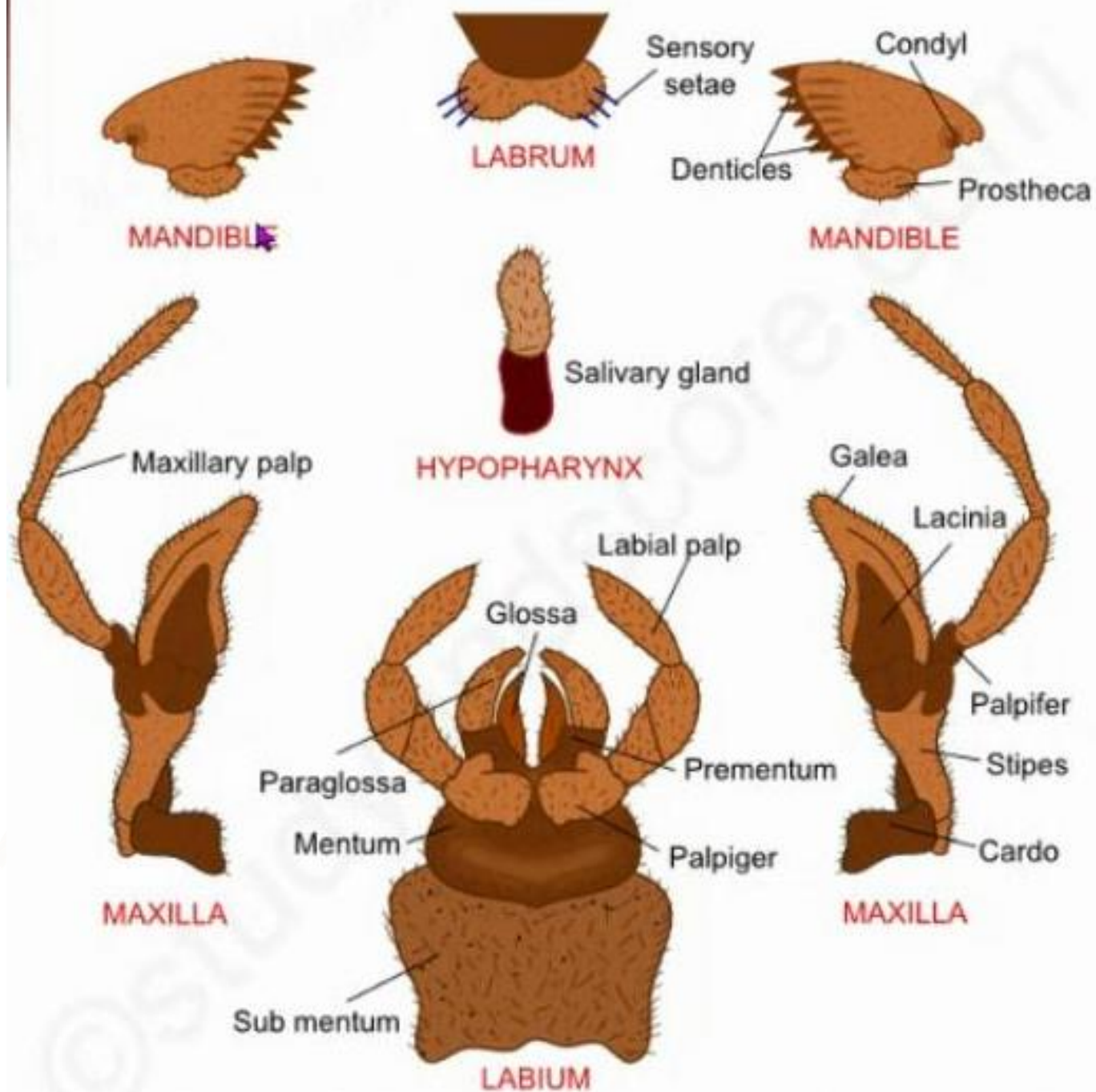
Body Part (Legs, Antenna) have Sensory Organ i.e. sensilla (Singular: Sensillum)

On Legs Chemo- and Mechanoreceptors

On Antenna Mechano- , Hygro- and Thermoreceptor

To Maintain their antenna responsiveness for the environmental Changes or Stimulus

To avoid False or Wrong Stimulus



MOUTHPARTS OF COCKROACH - BITING AND CHEWING TYPE

## How Grooming ???

### Stimulus

Extend the foreleg and head Bend slightly downward in the direction of the extended foreleg



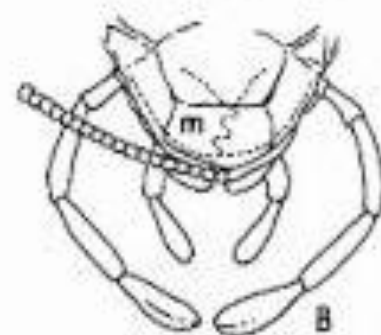
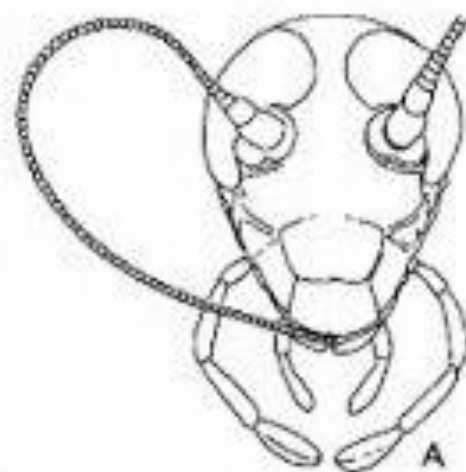
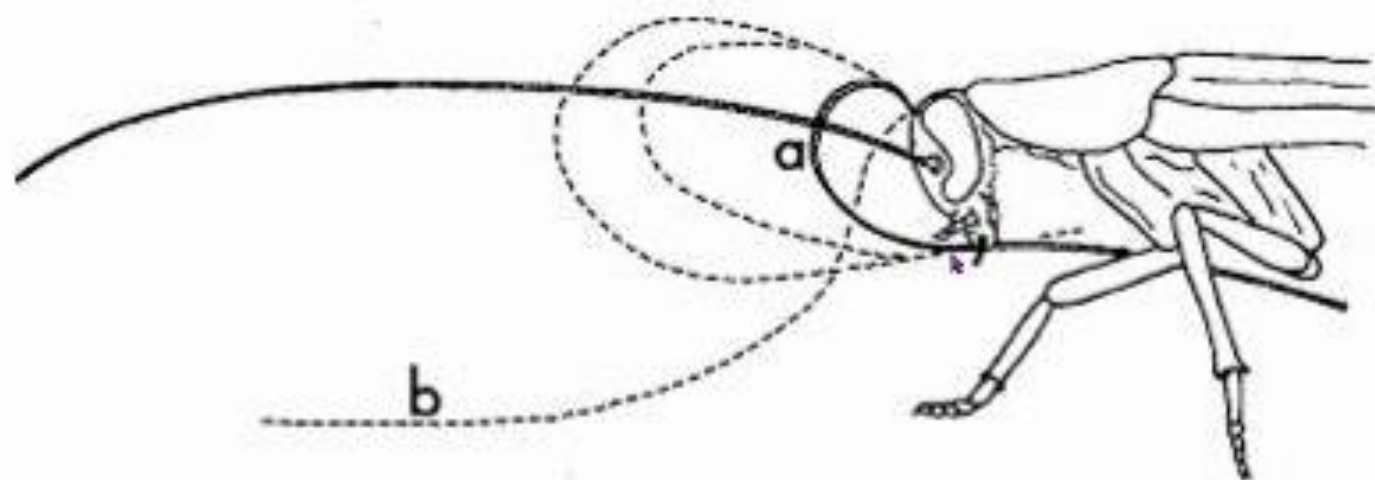
15-20<sup>th</sup> annuli of the antenna is contacted by the basal third of the fore tarsus



the leg moves in a posterolateral direction which guides the flagellum to the mouthparts



Slight retraction of the maxillary and labial palps to a position close to the flagellum





Thank You