

186. *Bombax mori* : Silk Worm Stages of Life Cycle

- Comments :
- (1) Various stages of life cycle are egg, larva, pupa adult male and female.
 - (2) Eggs : Female lays 300-500 eggs in clusters upon leaves of mulberry plant. After laying eggs female dies. Egg hatches into larva.

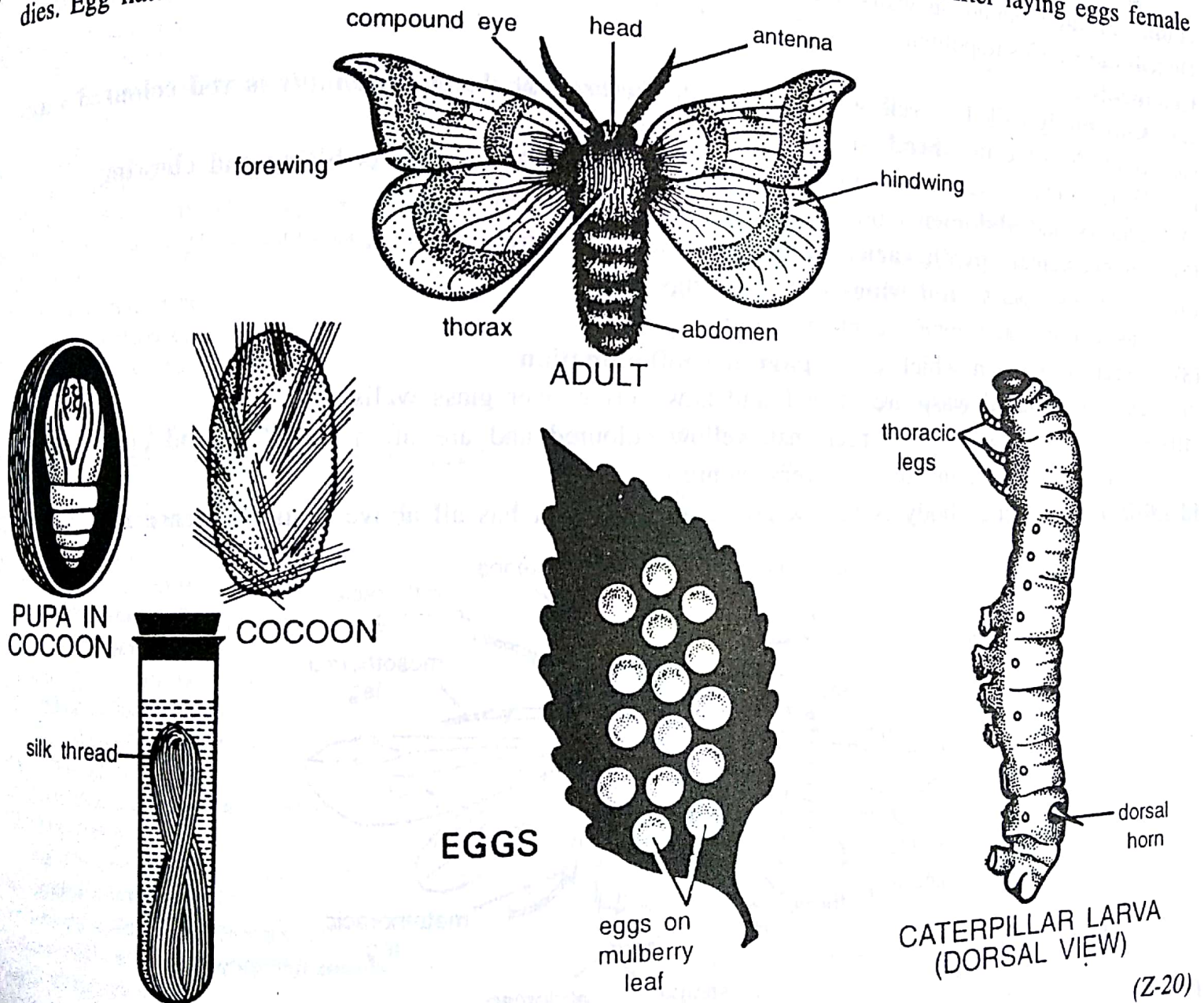


Fig. 186. Silk Worm. Stages of life cycle.

(Z-20)

- (3) **Larva** : Larva is called as **catterpillar**.
- (4) **Body of Larva** divisible into **head, thorax** and **abdomen**. Thorax contains 3 pairs of legs and posteriorly a dorsal horn.
- (5) Larva feeds on mulberry leaves by its mandibles and mouth parts and undergoes moulting as it grows.
- (6) Fully mature larva stops feeding and **secretes liquid** silk by its salivary glands. Liquid silk comes out through spinnerts and hardens into **5 silk filaments**. Another gland secretes **ciricin** which sticks to silk filaments forming silk threads. Larva changes into **pupa**.
- (7) Body of female in divisible into **head, thorax** and **abdomen**. Head contains antennae, paired compound eyes. Thorax has 3 pairs of legs, a pair of fore legs, and a pair of hind legs.
- (8) Silk worm provides in silk of different types.